

# FACTORY CRO FOR MEDICAL DEVICES & IVDs

## Reputation

Research by AVOS Consulting scored Factory a Net Promotor Score of **59**

*"We started our work with Factory because we knew we wanted to field a EU study first but don't have knowledge of the regulatory environment"*

*"Factory staff are an extension of our team. . . They want us to **succeed** and act as such."*

*"Factory provided us **regulatory advice** without even charging us initially. I was happy when the study started and I could pay them."*

## EXPERIENCE

### Esthetic Surgery

- Facial Fillers
- Facial Augmentation
- Skin repair

### Dermatology

- Malignant Melanoma Diagnostics
- Wound healing with biologicals

### Experience in Numbers

> 300	Clinical Trials
10-2200	Patients per study
1-45	Sites per study
1-12	Countries per study (incl. US)
28days – 10yrs	Follow-up period



Factory performed clinical trials in countries all over Europe, **and many beyond.**

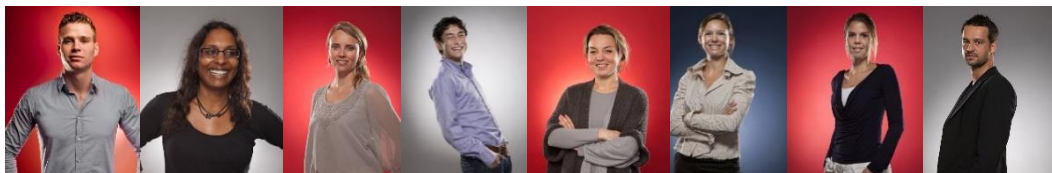
## REGULATORY UPDATE

**15 June 2016:** THE NEW MEDICAL DEVICE REGULATION will be presented to the European Parliament for debate and voting: This includes a change in the **regulatory requirements for cosmetics:**

"Devices with both medical and a non-medical intended purpose should fulfil the requirements applicable to devices with and without a non-medical purpose."

## THE PEOPLE

The Factory Team characterizes by **pro-activity, swift communication** and **flexibility.**



### Factory Europe

Contact:  
Dirk Meijer  
[d.meijer@factory-cro.com](mailto:d.meijer@factory-cro.com)  
+31 302292727

[www.factory-cro.com](http://www.factory-cro.com)

### Factory US

Contact:  
Joris Bannenberg  
[j.bannenberg@factory-cro.com](mailto:j.bannenberg@factory-cro.com)  
+1 6093752485

### Global Coverage

